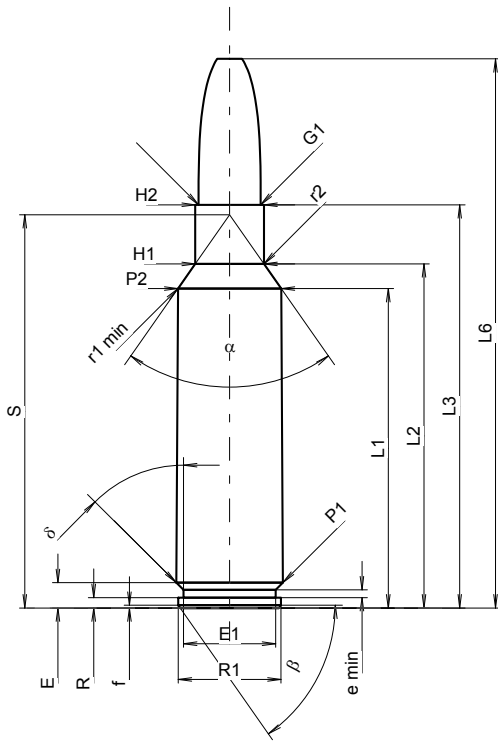


C.I.P.

325 WSM

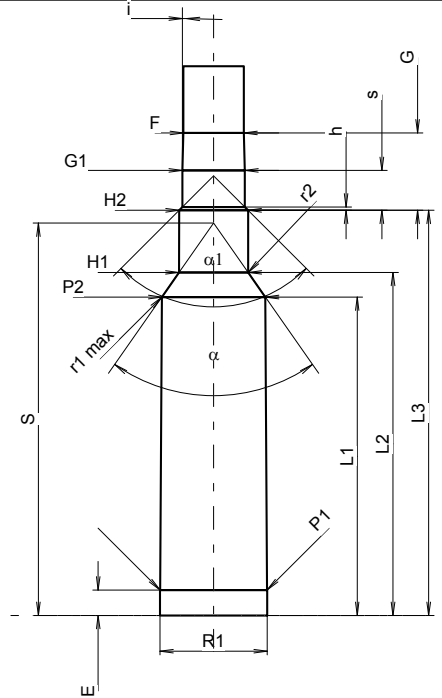
TAB. I
Date 07-05-14

Country of Origin: US

Revision


CARTRIDGE MAXI			
Lengths			
L1 ¹⁾	=	42.25	-0.20
L2 ¹⁾	=	45.52	-0.20
L3 ¹⁾	=	53.34	
L4	=		
L5	=		
L6	=	72.64	
Case Head			
R	=	1.37	
R1	=	13.59	
R3	=		
E	=	3.35	
E1	=	12.19	
e min	=	1.02	
delta	=	45°	
f	=	0.36	
beta	=	55°	
Powder Chamber			
P1	=	14.12	
P2 ¹⁾ *	=	13.67	-0.20

CHAMBER MINI			
Lengths			
L1	=	42.12	
L2	=	45.38	
L3 ¹⁾	=	53.59	
Breech			
R	=		
R1	=	14.19	
R2	=		
R3	=		
r	=		
Powder Chamber			
E	=	3.35	
P1 ¹⁾	=	14.15	
P2 [*]	=	13.70	



Junction Cone			
alpha [*]	=	70°	
S [*]	=	52.01	
r1 min	=	1.27	
r2	=	2.54	
Collar			
H1 [*]	=	9.09	
H2 ¹⁾	=	9.09	
Projectile			
G1 ¹⁾	=	8.22	
G2	=		
F	=		
L3+G ¹⁾	=	63.58	
Pressures (Energies)			
Method Transducer			
Pmax	=	4350 bar	
PK	=	5000 bar	
PE	=	5430 bar	
M	=	25.00	
EE	=	5100 Joule	
Miscellaneous Dimensions			
Fe ¹⁾³⁾	=	0.10	
delta L	=	0.11	

Junction Cone			
alpha ¹⁾ *	=	70°	
S [*]	=	51.91	
r1 max	=	1.27	
r2	=	3.05	
Collar			
H1 [*]	=	9.14	
H2 ¹⁾	=	9.12	
Commencement of Rifling			
G1 ¹⁾ *	=	8.26	
G ¹⁾	=	10.24	
alpha1 [*]	=	90°	
h	=	0.43	
s	=	5.28	
i ¹⁾ *	=	1°30'	
w	=		
Barrel			
F ¹⁾ *	=	8.00	
Z ¹⁾	=	8.20	
Grooves			
b	=	4.47	
N	=	4	
u	=	254.00	
Q	=	52.16	mm ²

Scale 1:1

 Dimensions in << mm >>
 Dimensions and Tolerances for Proof Barrels
 see Appendix CR 1.

 Notes: 1) Check for safety reasons
 3) Headspace on Shoulder
 * Basic dimensions